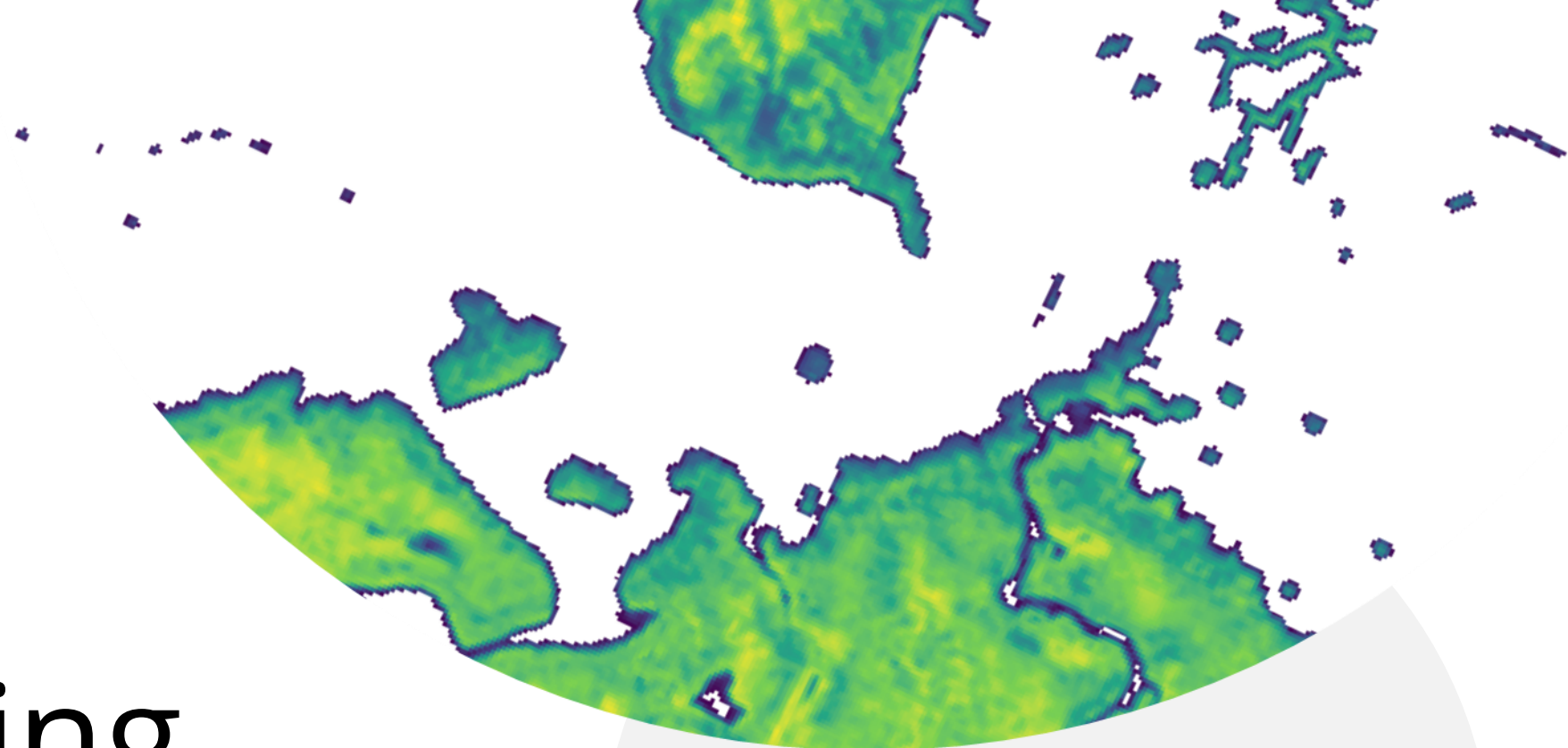




**American Anthropological Association**

November 21, 2024

Tampa, FL



# Using Machine Learning to Document, Preserve, and Protect **Southwest Florida's Archaeological Legacy**



**Olivia Zhang**

Department of Geography

University of Florida

**Dr. Nicolas Gauthier**

AI for Bio/Cultural Diversity Lab

Florida Museum of Natural History

**Dr. Michelle J. LeFebvre**

South Florida Archaeology

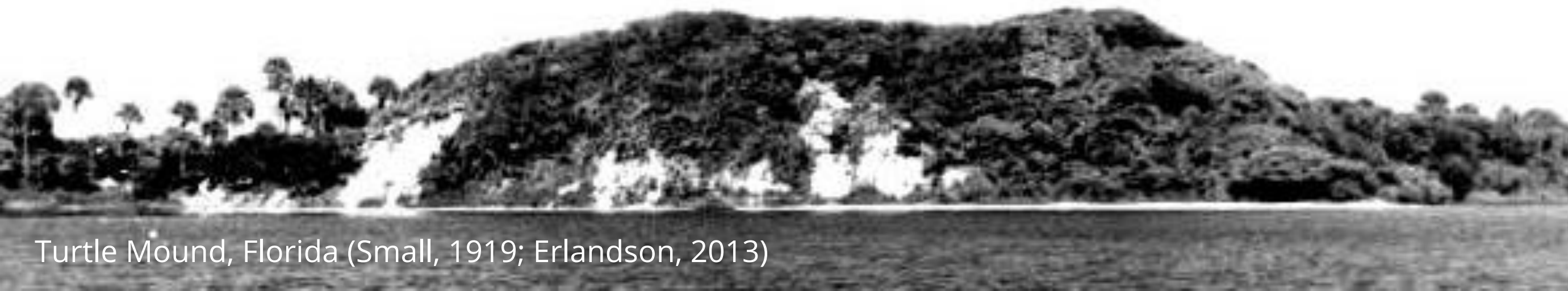
Florida Museum of Natural History





# WHAT ARE SHELL MOUNDS?

- Large earthworks of shells (clams, oysters, whelks), and other objects; found globally and prevalent along Florida's Gulf Coast
- Created by generations of Indigenous Peoples
- Vulnerable to hurricanes and other disaster events
- Currently, we do not know the locations of all shell mounds in Florida, limiting historic preservation and disaster response efforts



Turtle Mound, Florida (Small, 1919; Erlandson, 2013)

## Shell Middens at Fort George Florida State Parks



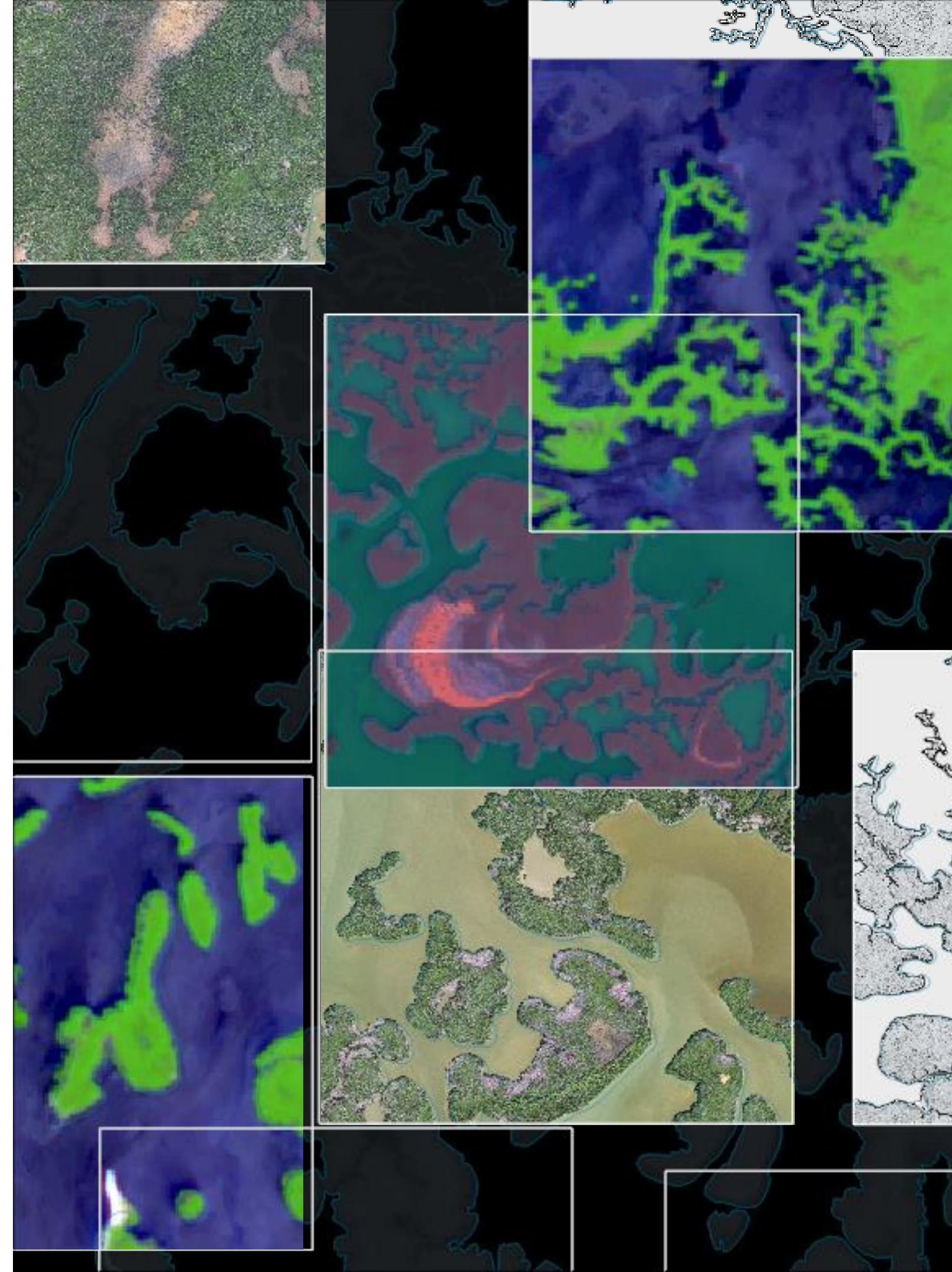
## Hurricane Ian (2022)

NASA Earth Observatory image by Joshua Stevens



# WHAT MAKES SHELL MOUNDS STAND OUT?

- Elevated above the ground—can be seen with Lidar-derived digital elevation models
- Supports unique plant communities (e.g., endemic species)—can be seen from satellite and aerial imagery
- How can we apply AI to identify these characteristics and patterns of shell mounds?

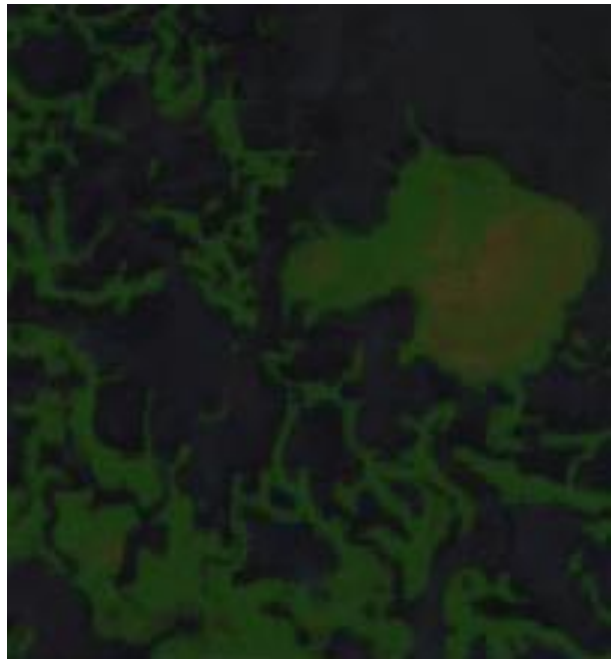




# VIEWS OF SHELL MOUNDS

Fakahatchee  
Key

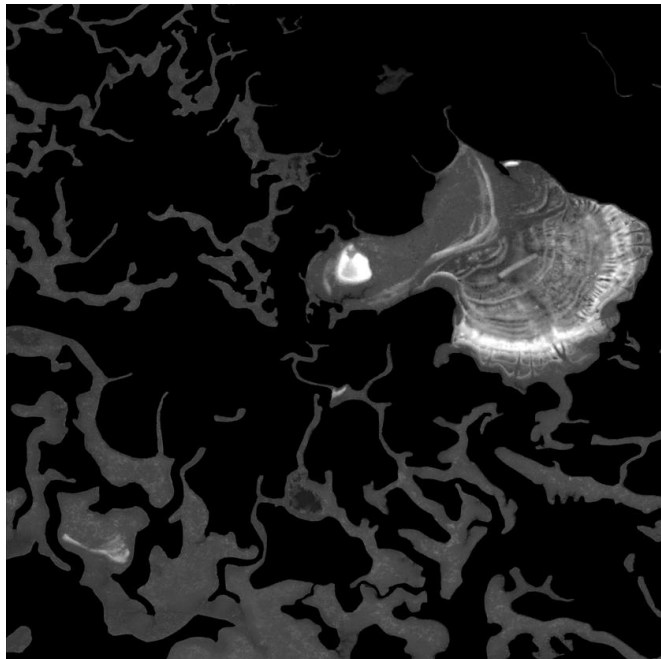
**Satellite Image**  
Sentinel-2 (Bands 11, 8, 2)



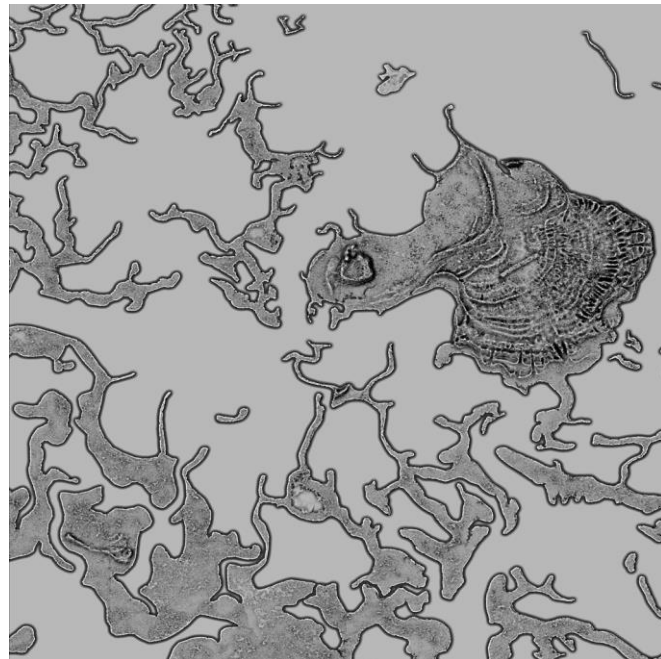
**Aerial Image**  
National Agriculture  
Imagery Program



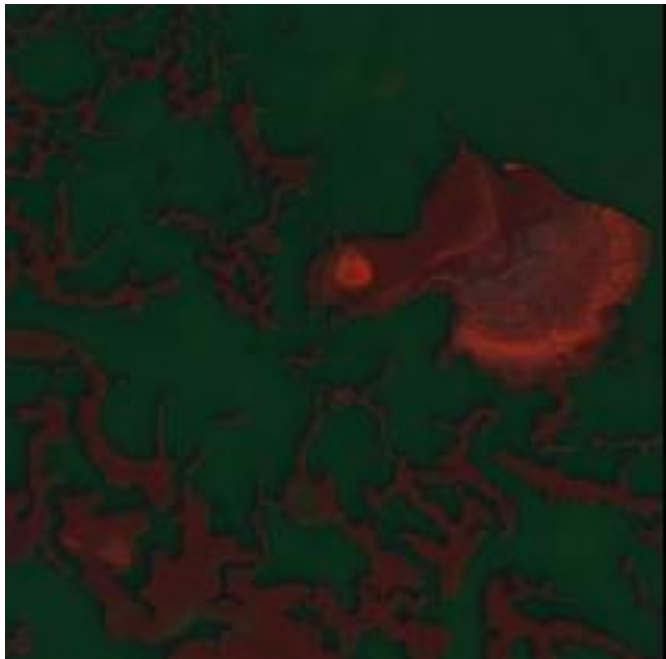
**LiDAR-derived DEM**  
USGS, FDEM, NOAA



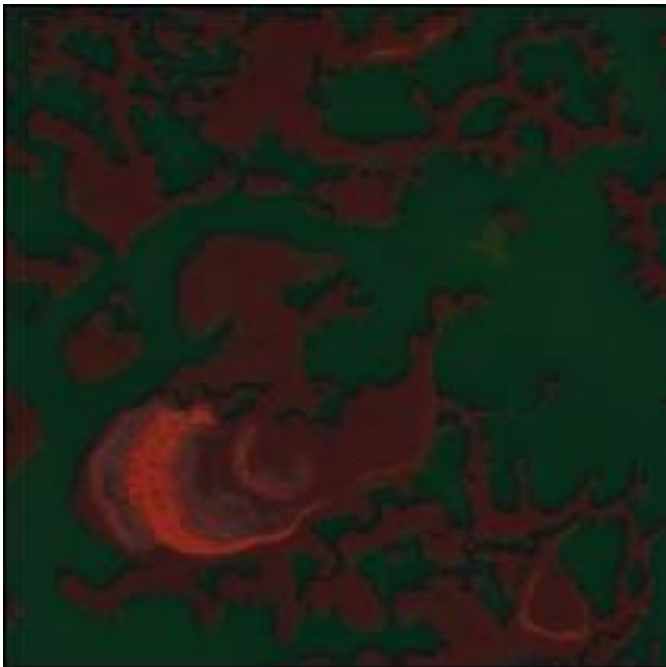
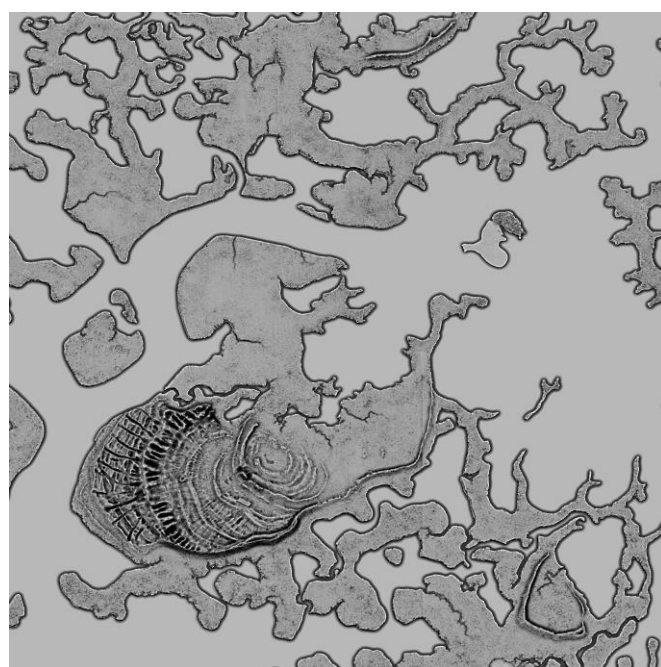
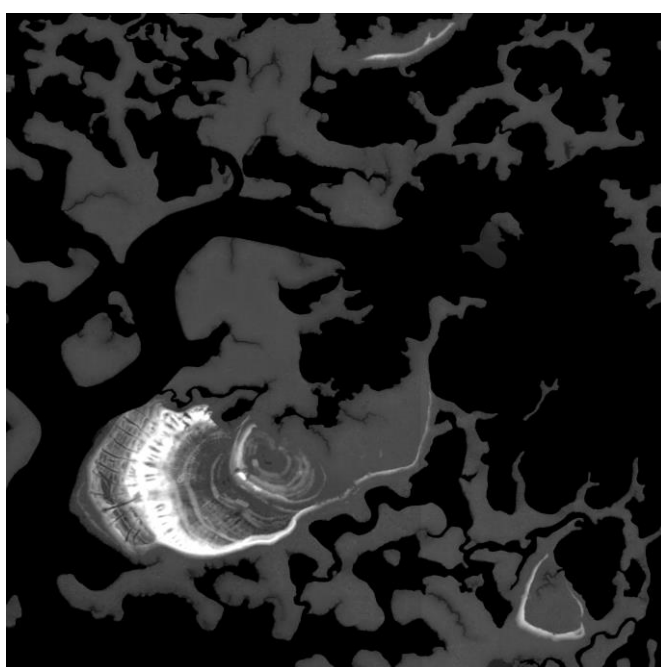
**Visualization for  
Archaeological Topography**  
Relief Visualization Toolbox



**Satellite Image + DEM**  
Principal Components Analysis



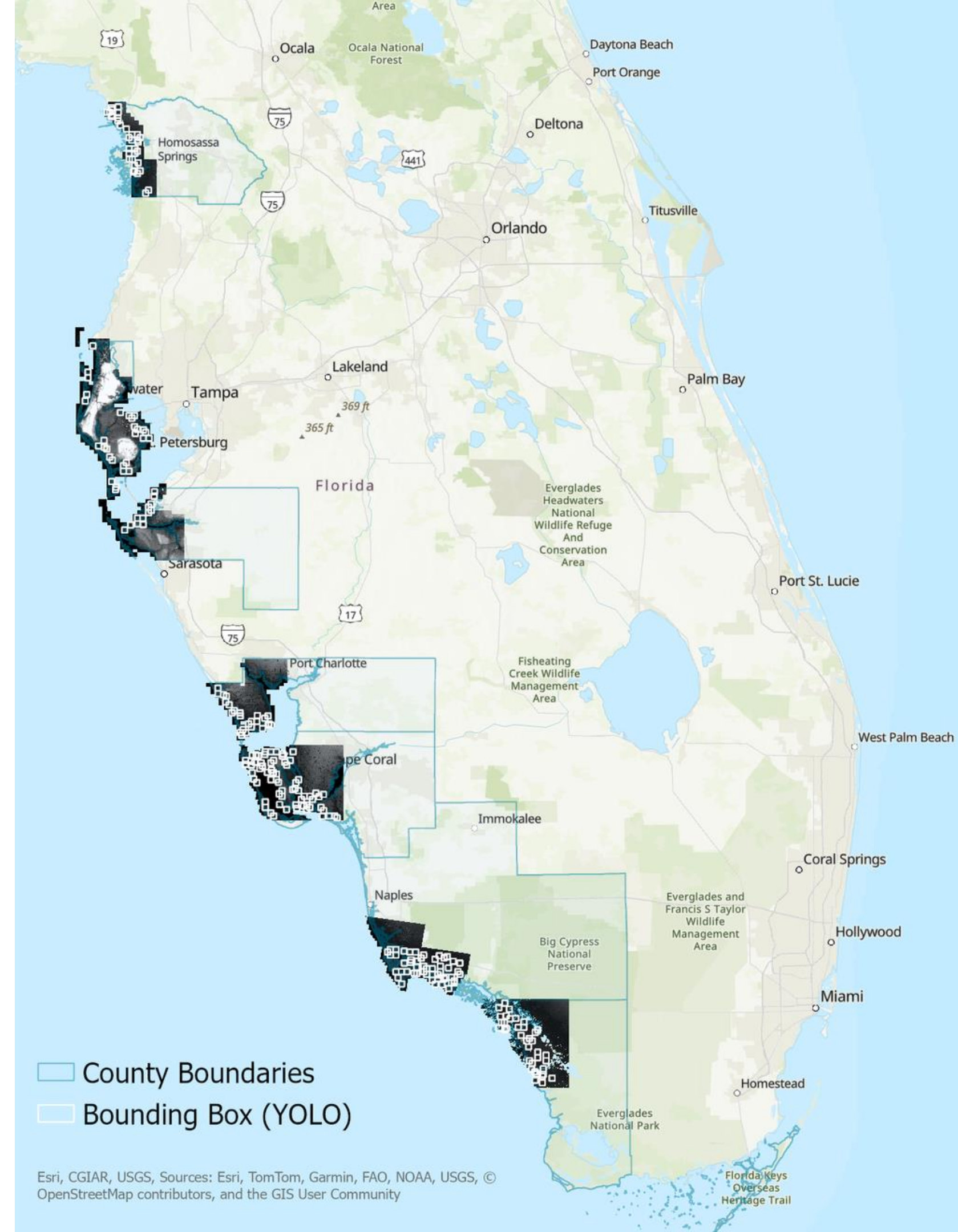
Dismal  
Key

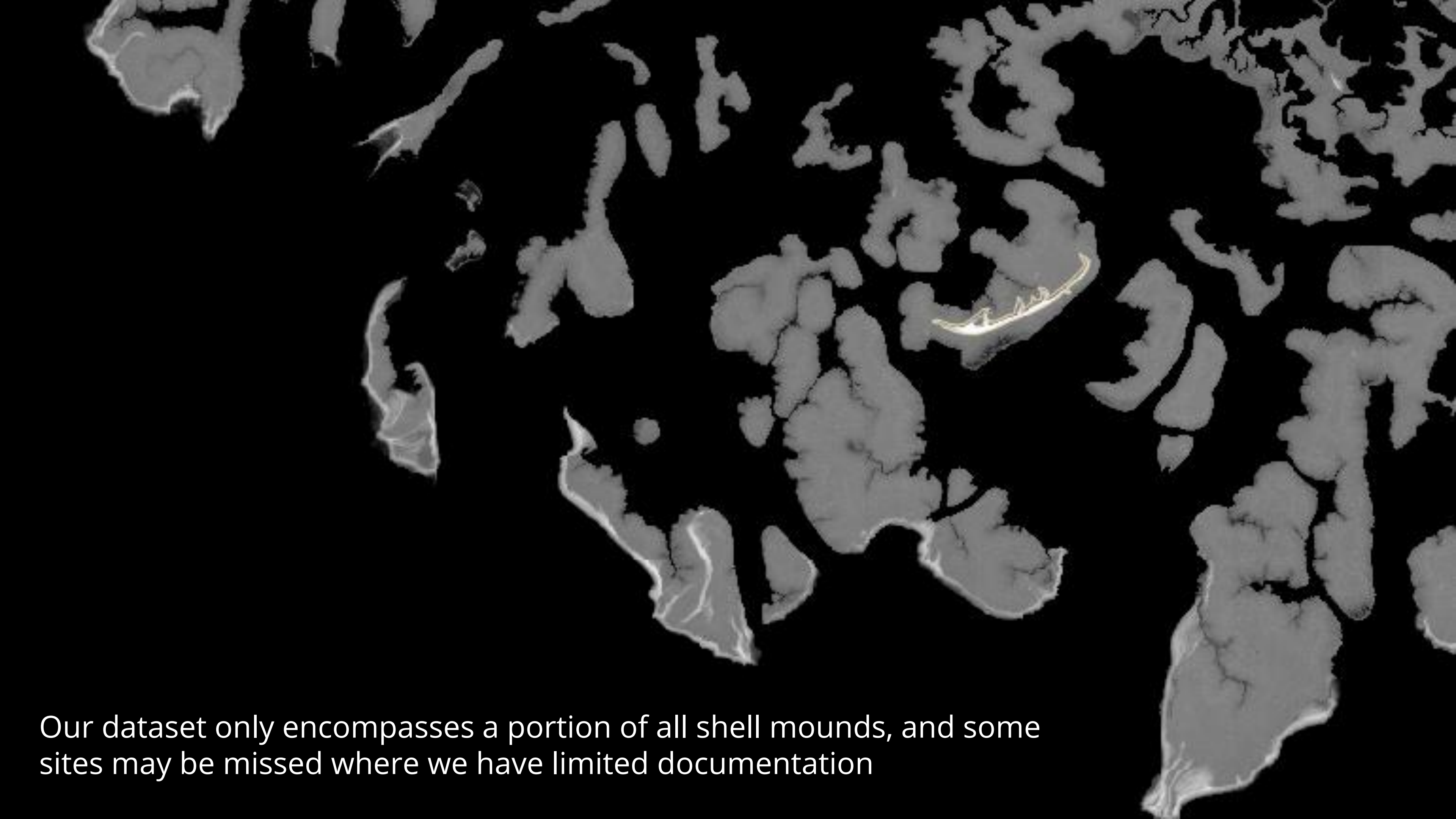




# DATA EXTENT

- Satellite, aerial, and elevation data from seven counties:
  - Citrus, Pinellas, Manatee, Charlotte, Lee, Collier, Monroe
- Shell mound locations from Florida Master Site File from the Florida Division of Historical Resources, manually corrected based on Lidar DEM data
  - ~200 shell mounds in total





Our dataset only encompasses a portion of all shell mounds, and some sites may be missed where we have limited documentation



# OBJECT DETECTION & SEGMENTATION WITH YOLOv8

*You Only Look Once (YOLO) version 8, developed by Ultralytics*

- Can **detect** objects in images
- And **trace** their specific shape
- Already trained on Microsoft Common Objects in Context (COCO) dataset (~200K labeled images with 80 different objects)
  - Does not include shell mounds
- We fine-tune this model with ~100 epochs to be able to recognize shell mounds, while keeping the knowledge learned from the default model

Detect

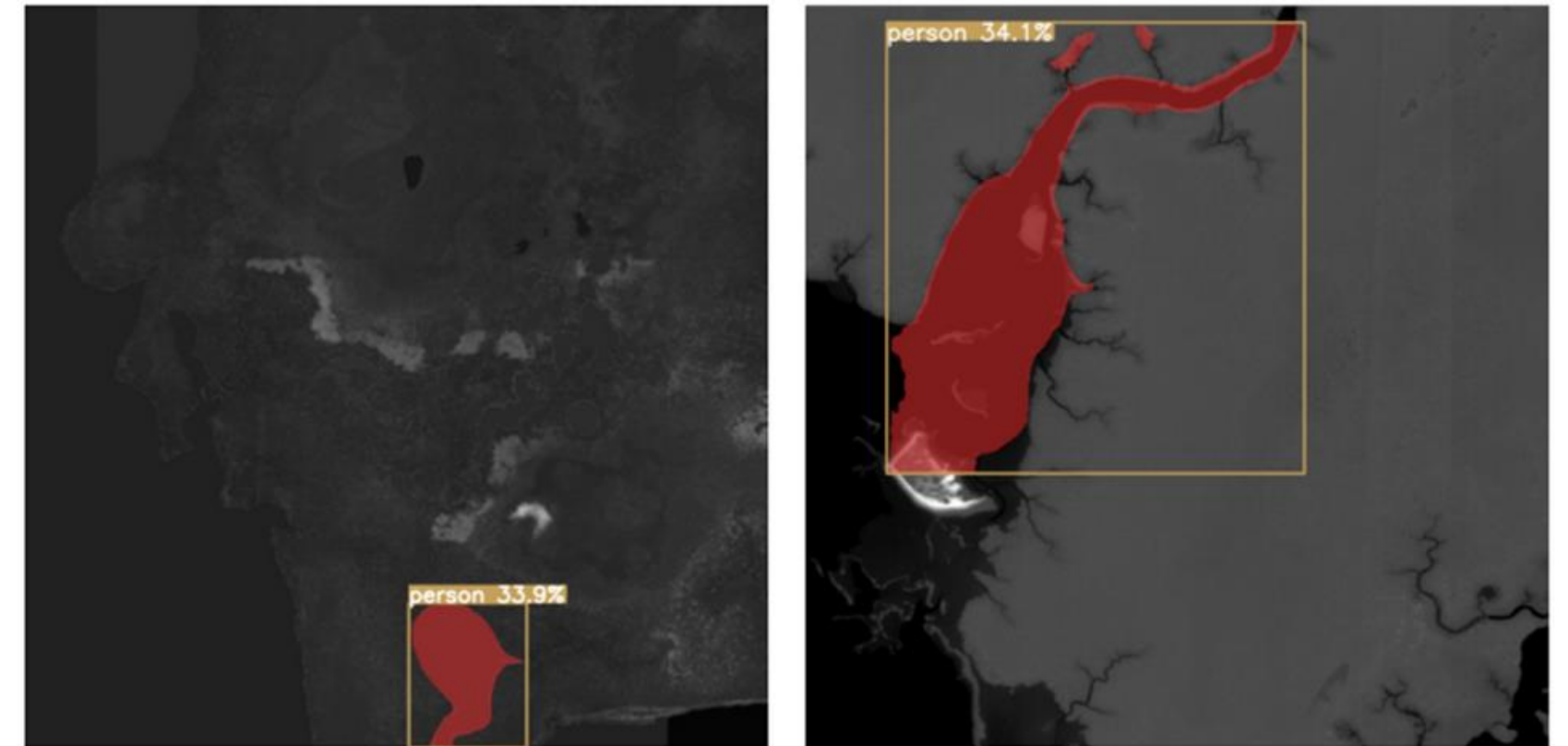
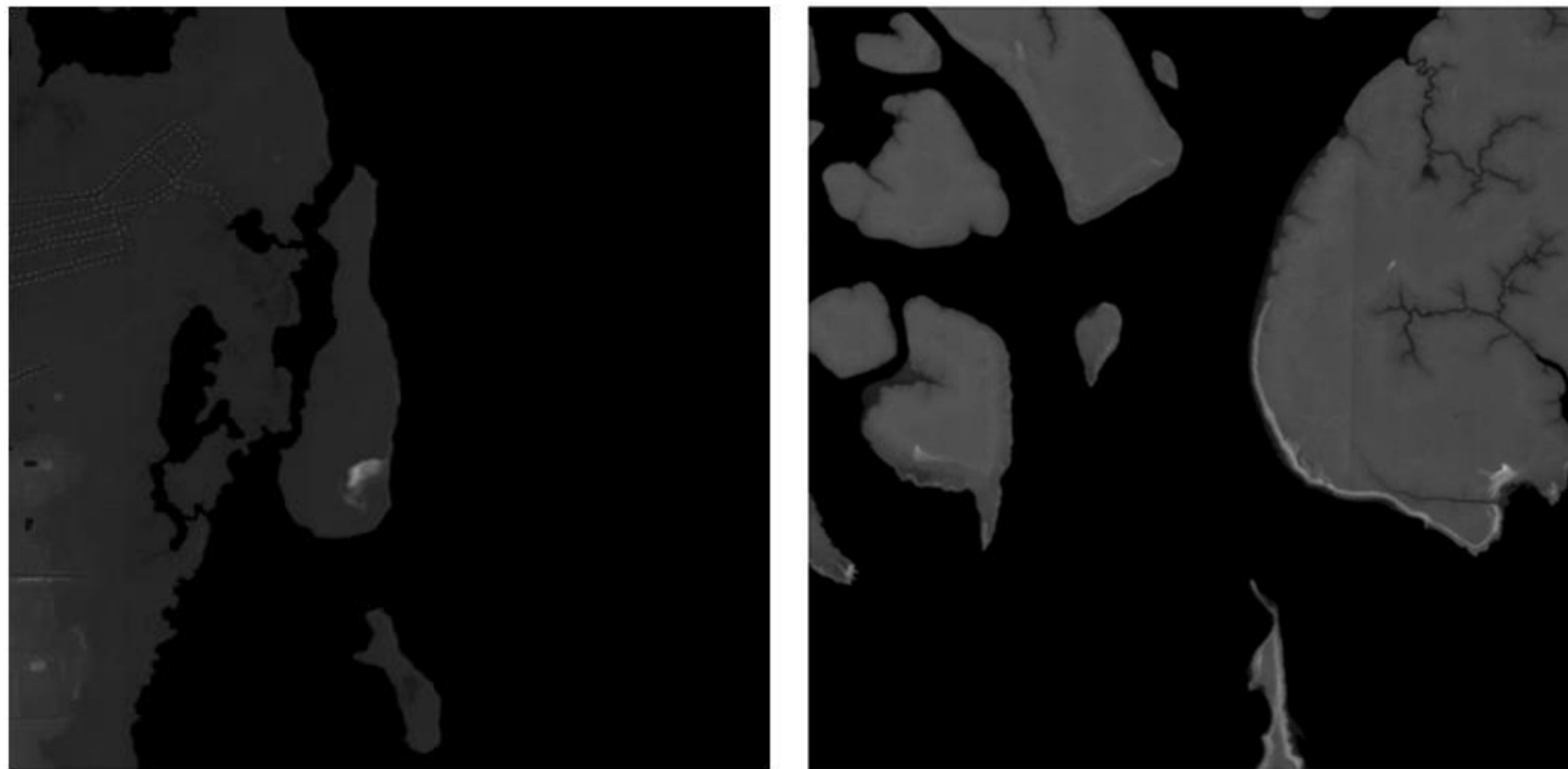


Segment



# WHY FINE TUNE?

The YOLOv8 model on its own sometimes doesn't predict anything . . .

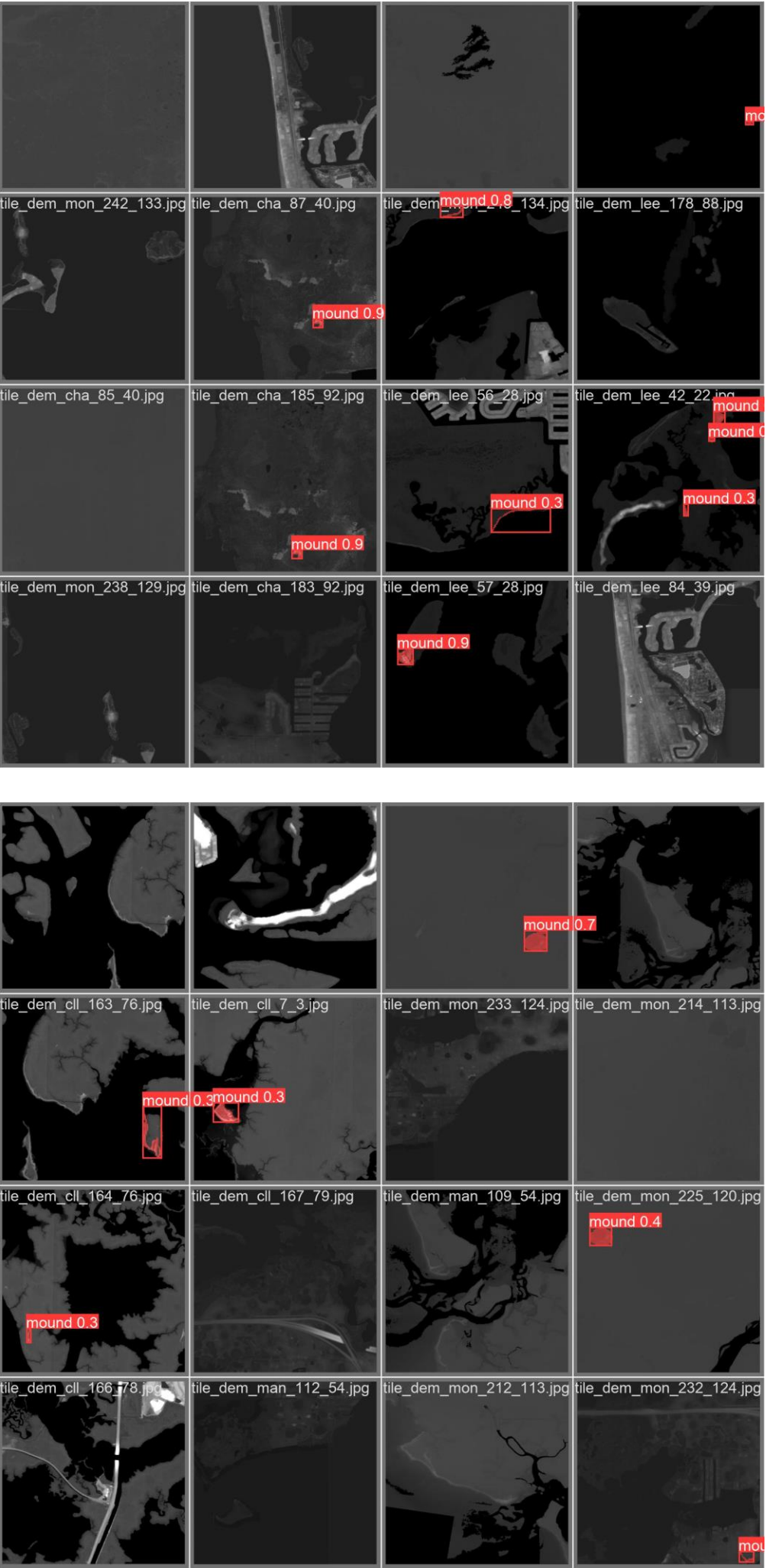
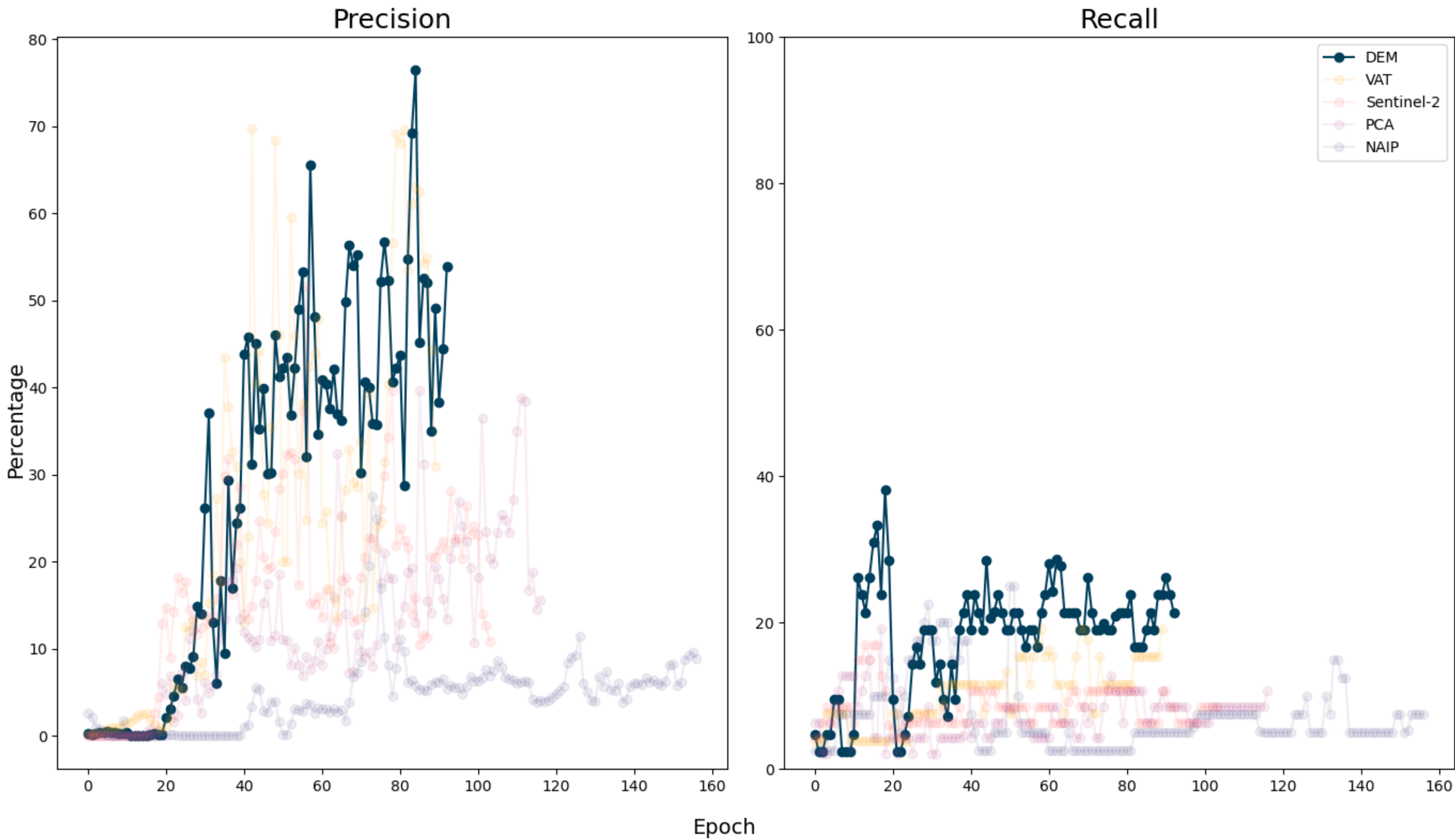


. . . or makes very incorrect predictions because **shell mound** is not one of the categories it is trained on



# Results

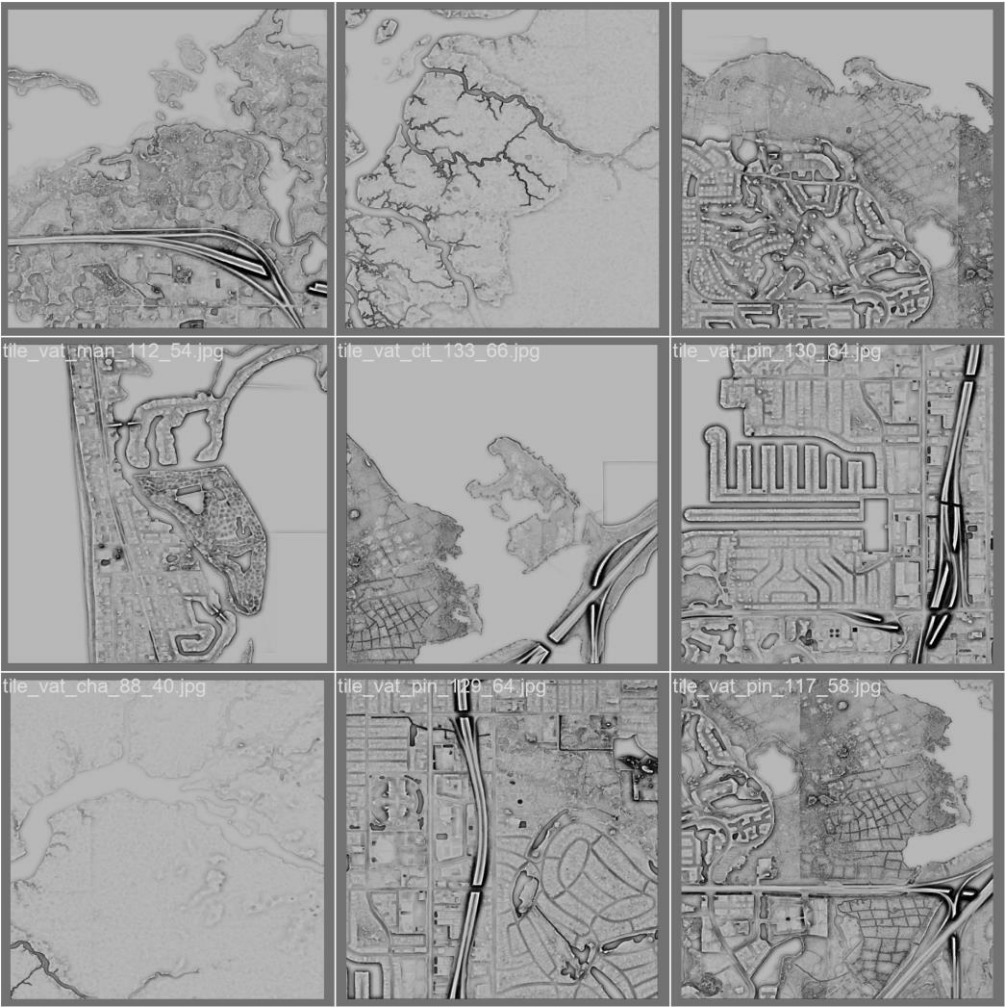
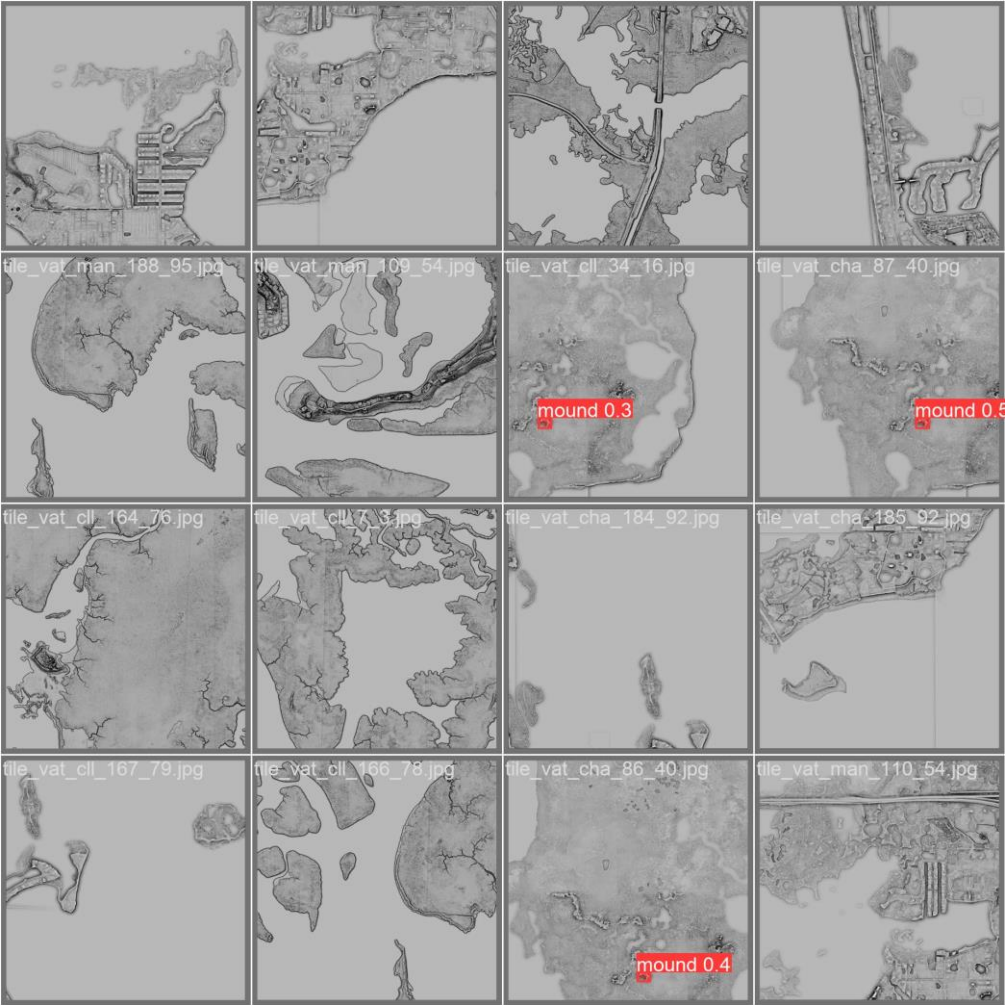
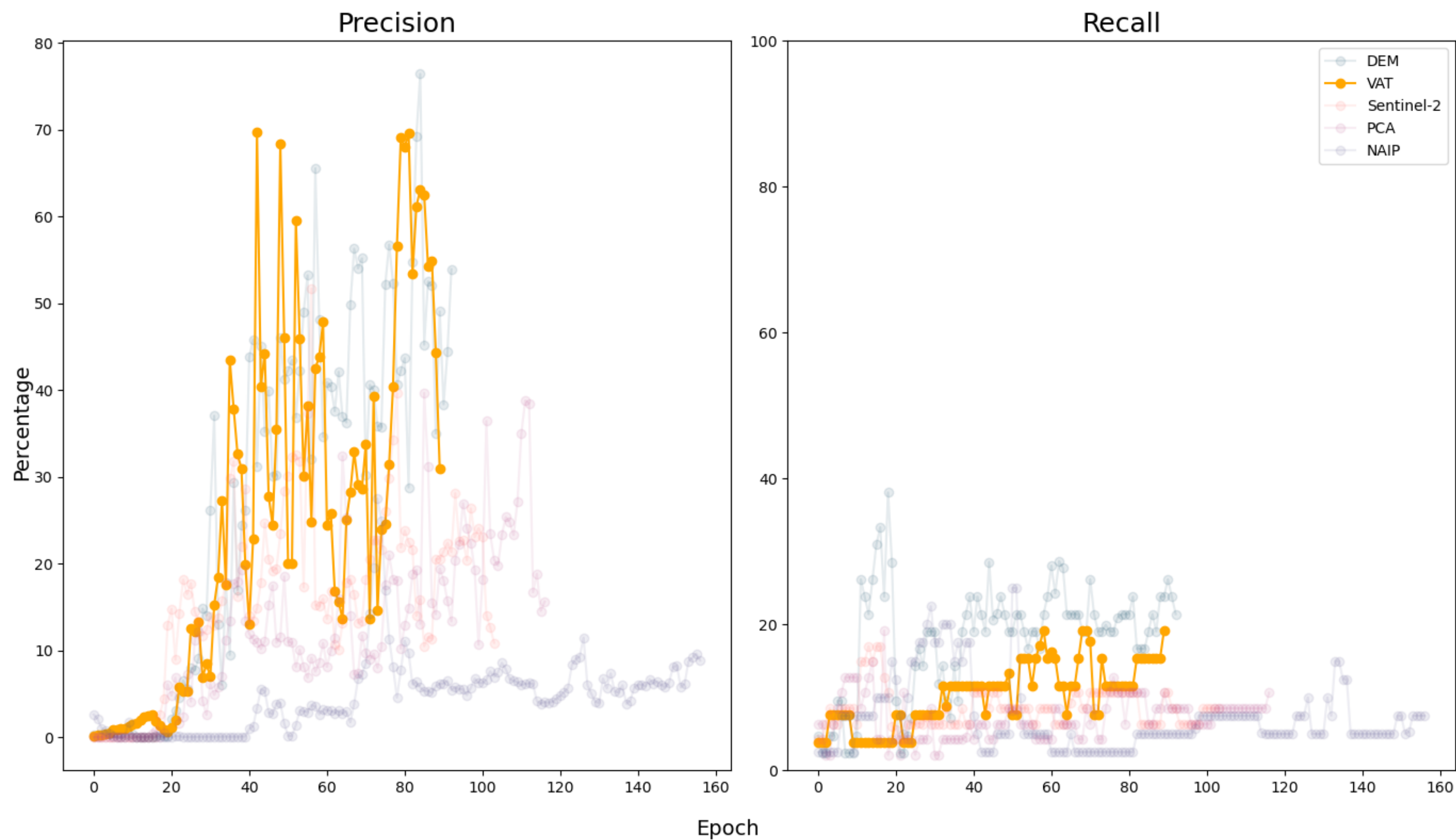
Lidar-derived Digital Elevation Model (USGS, FDEM, NOAA)





# Results

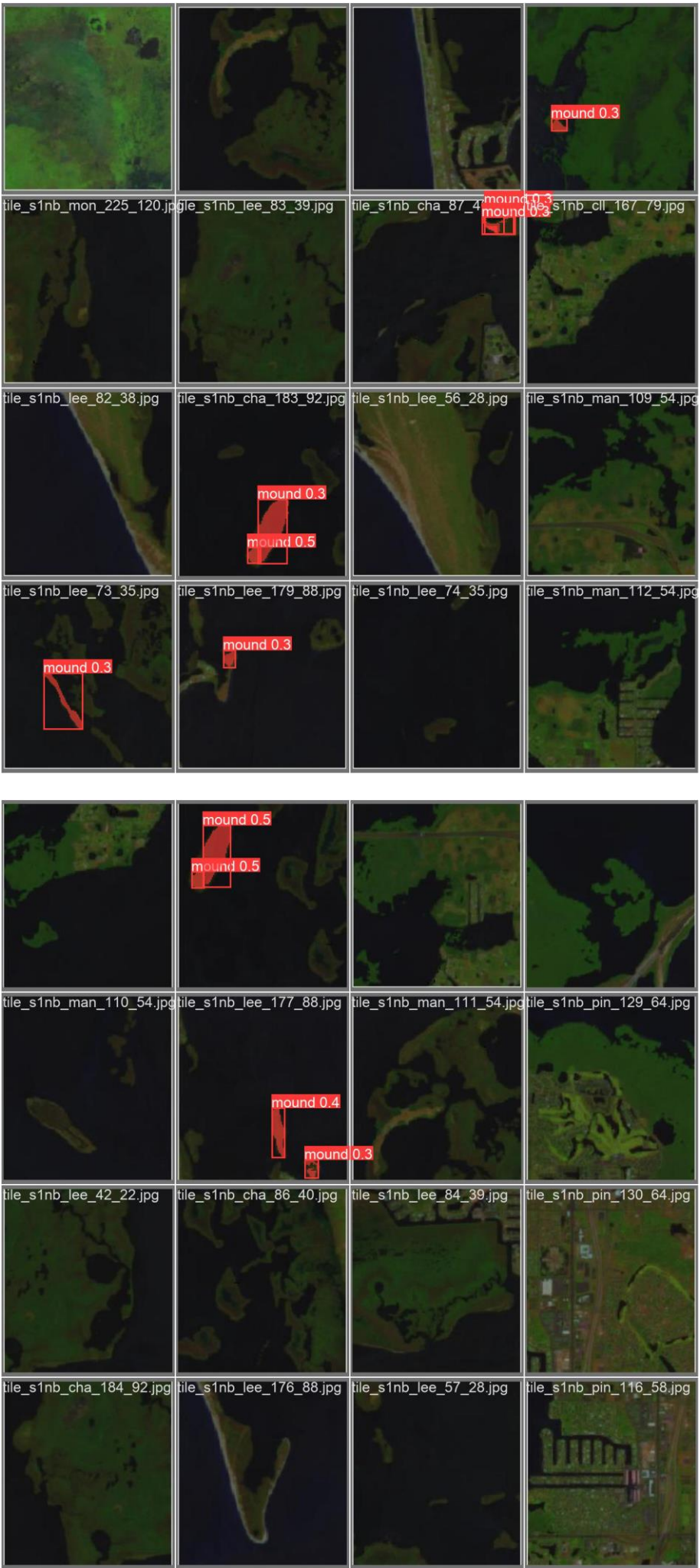
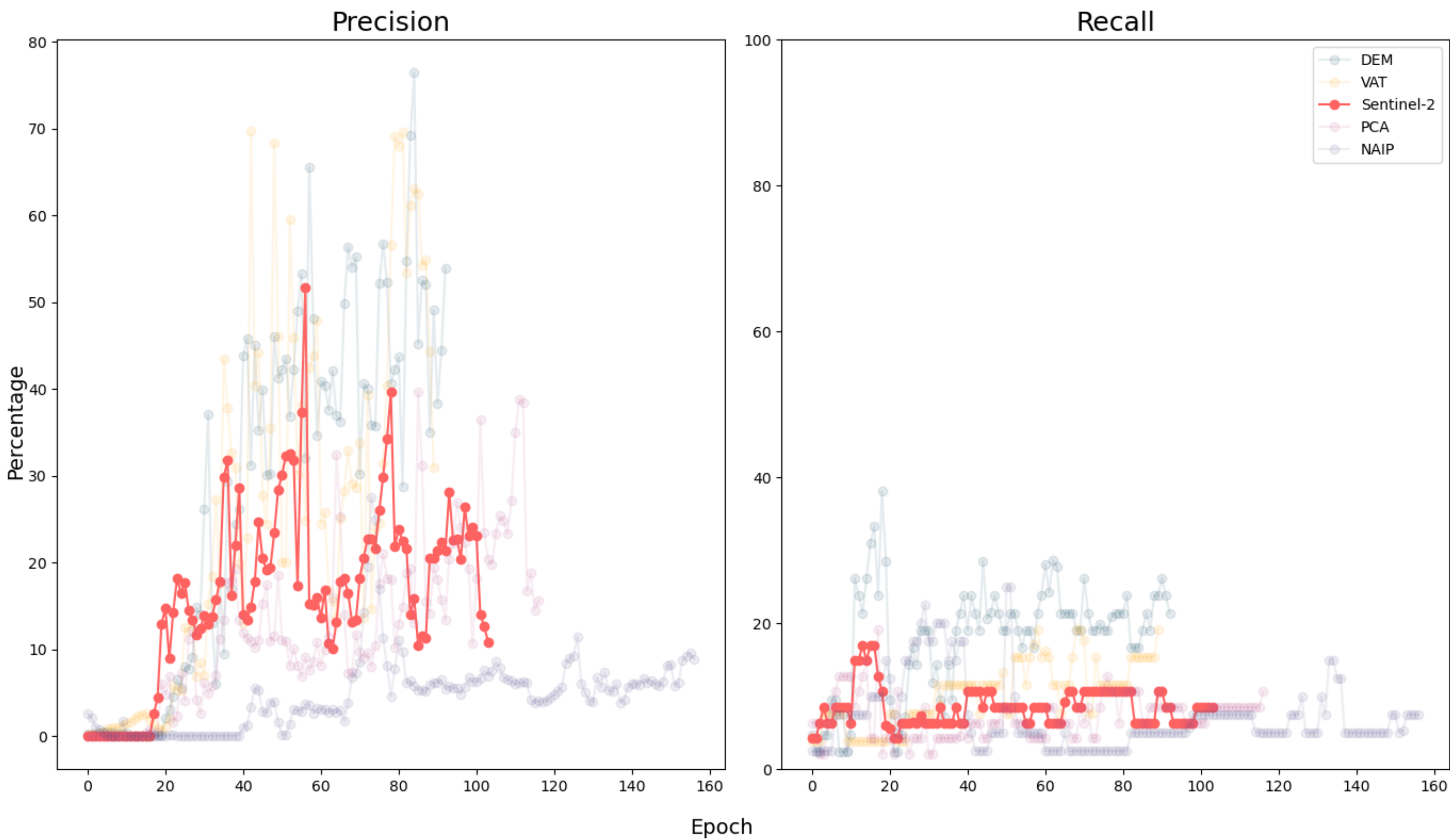
Visualization for Archaeological Topography (Relief Visualization Toolbox)





# Results

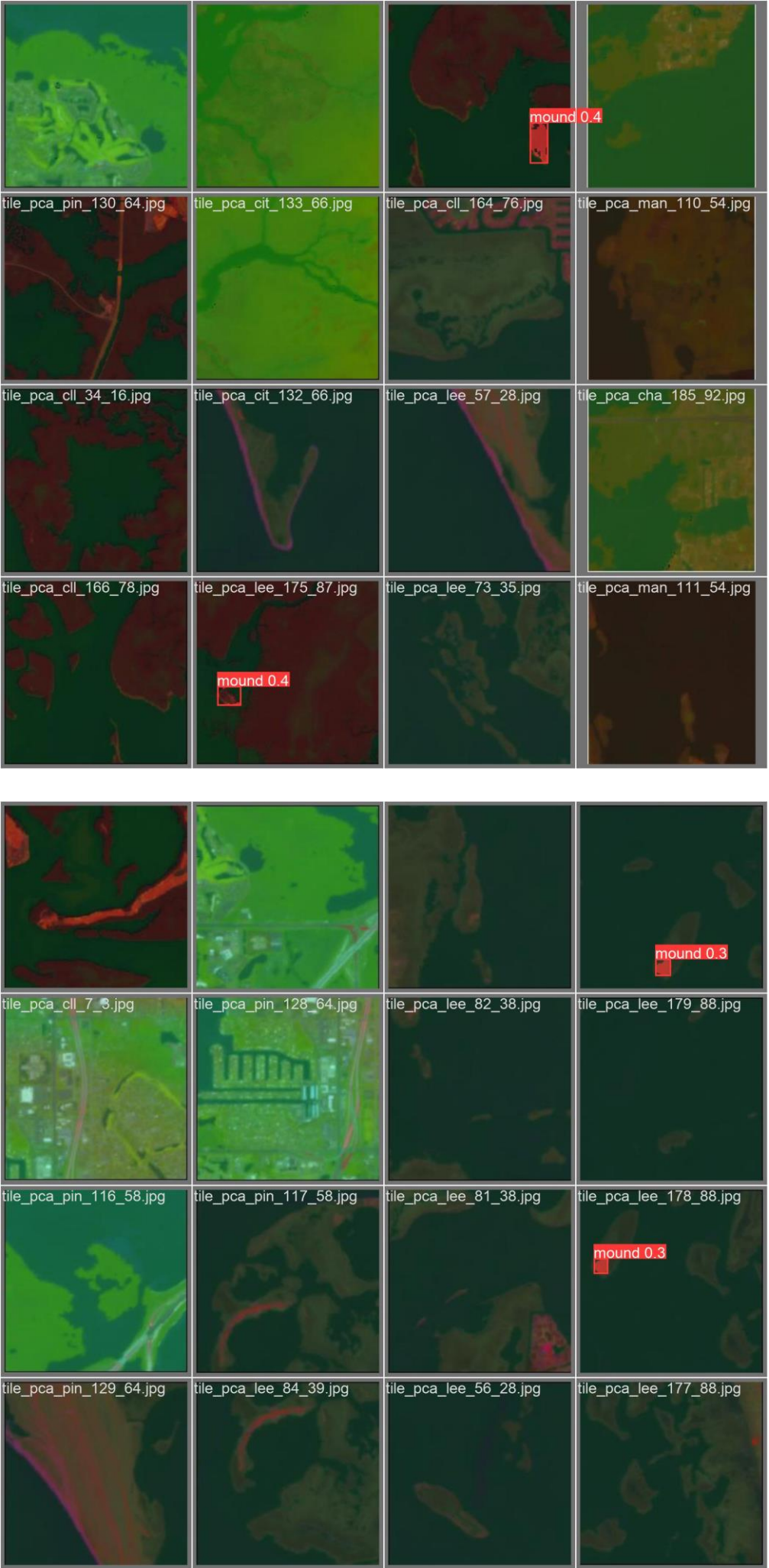
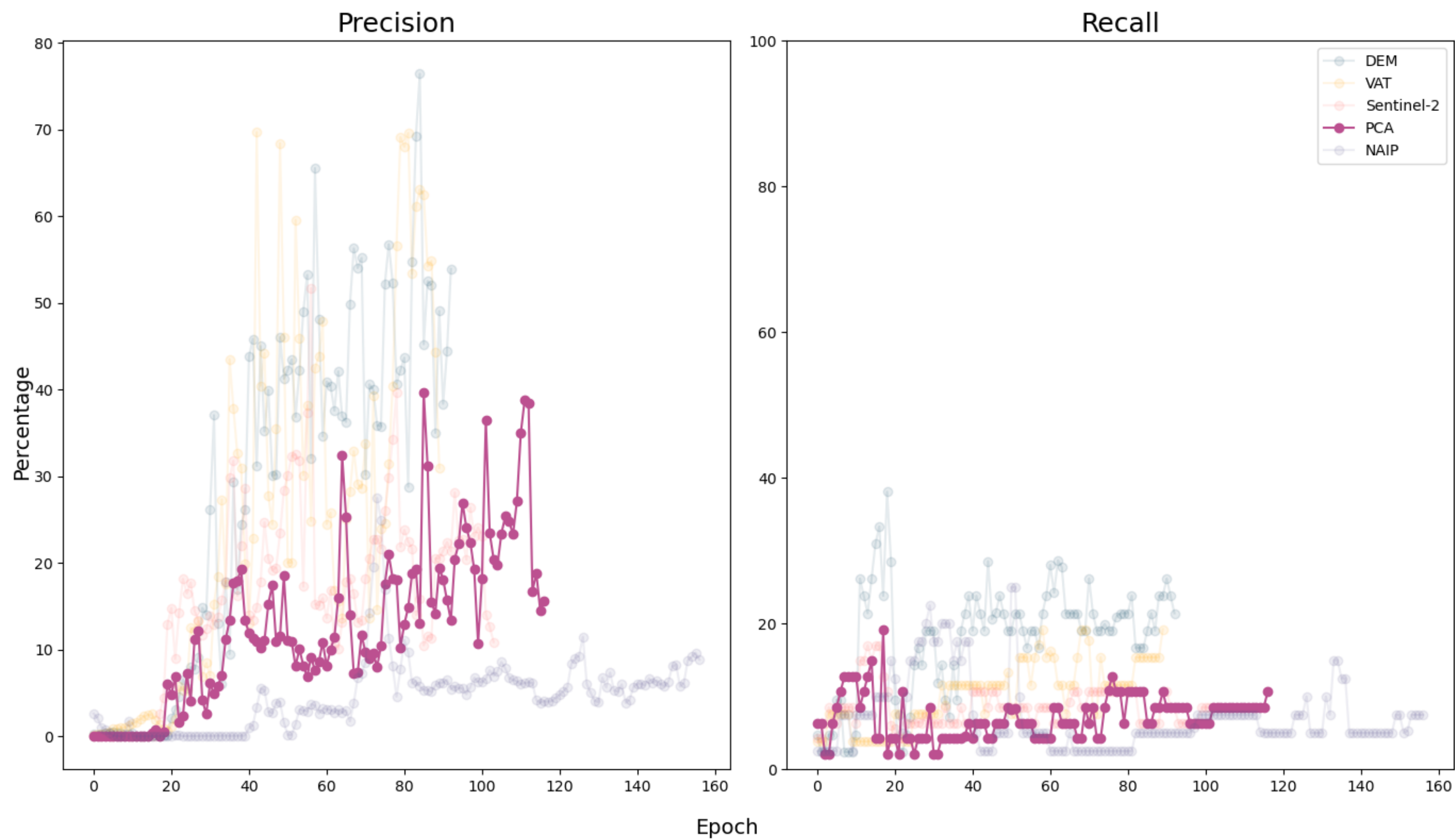
Sentinel-2 Mosaic (Bands 11, 8, 2)





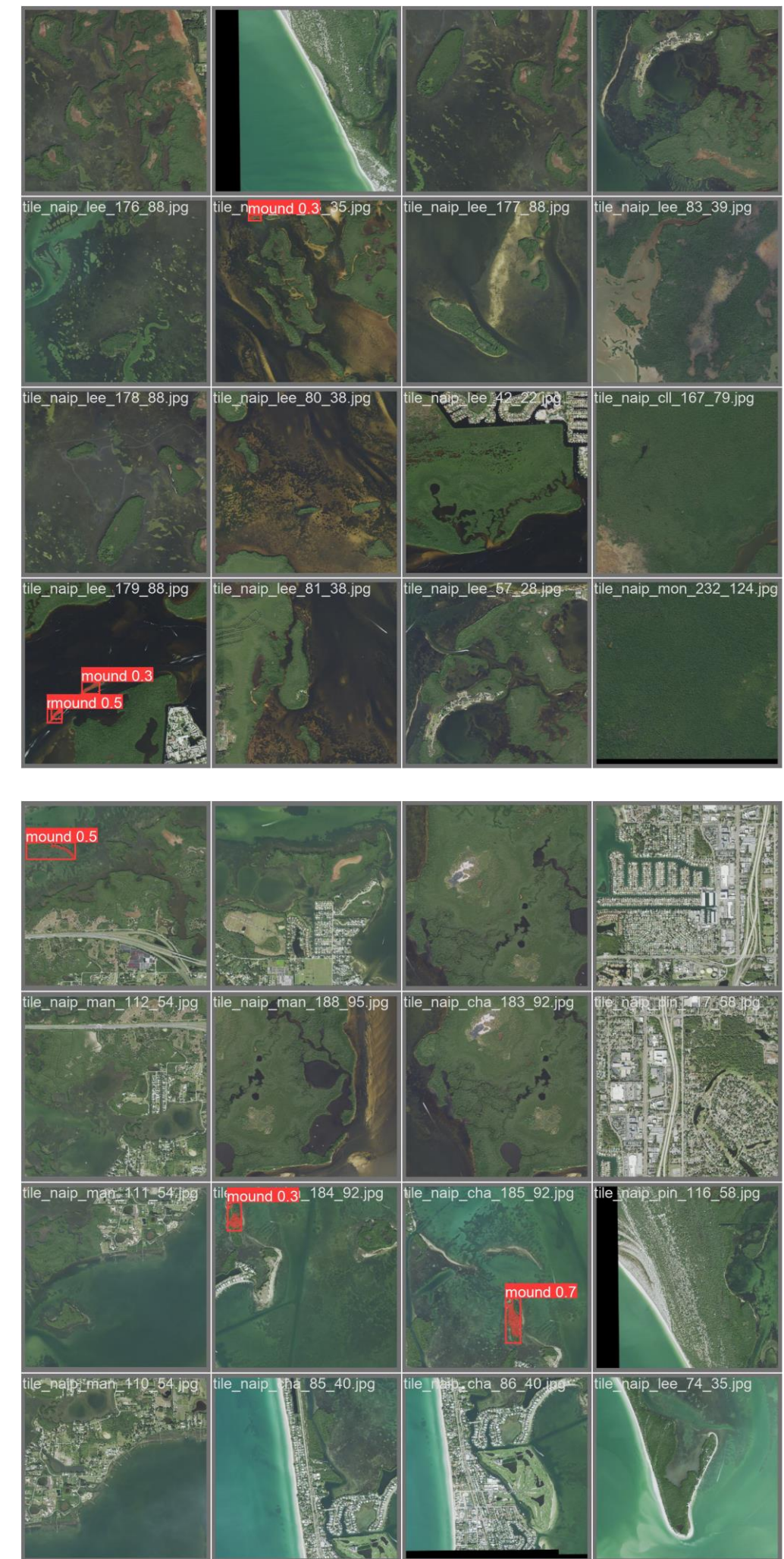
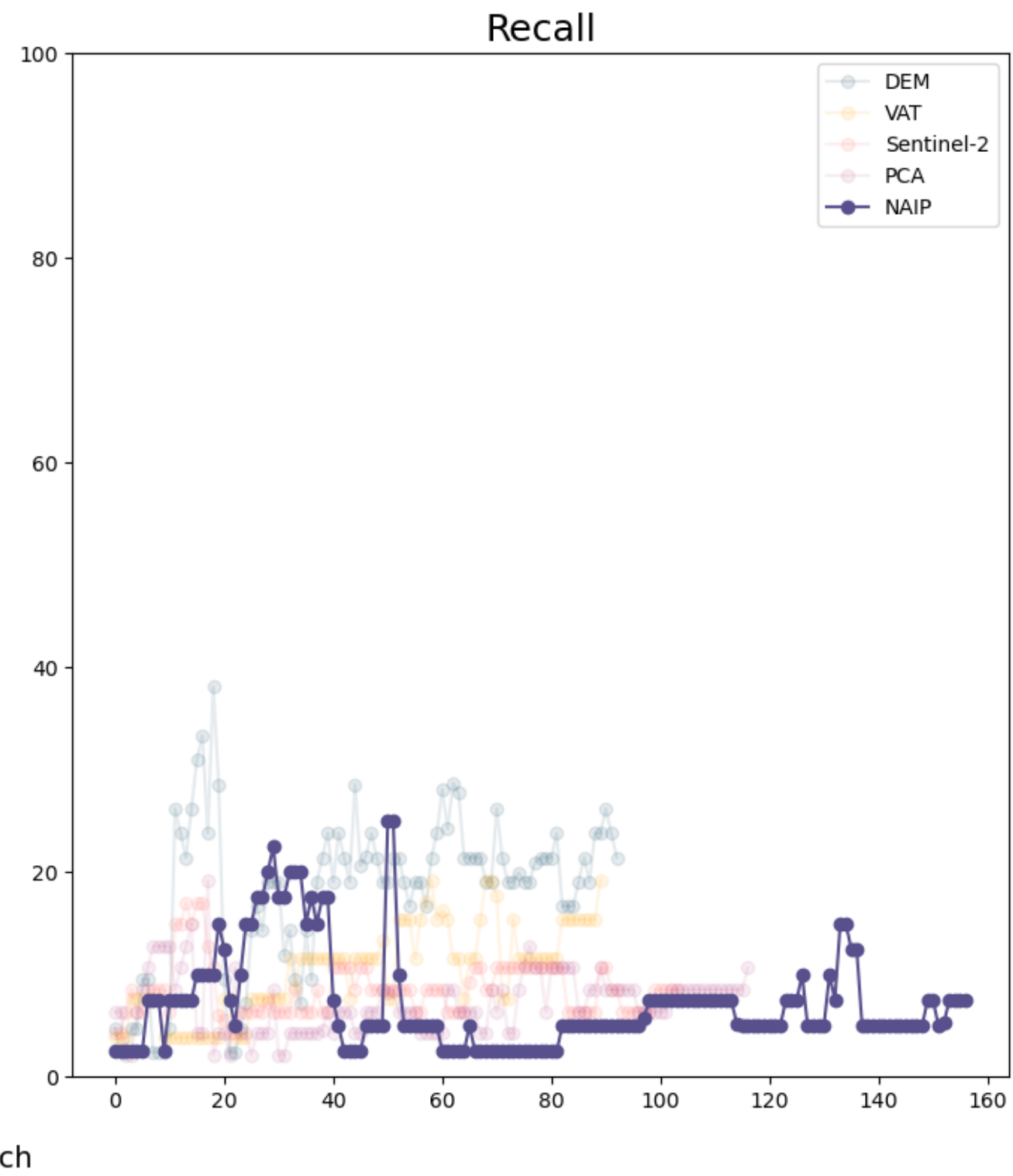
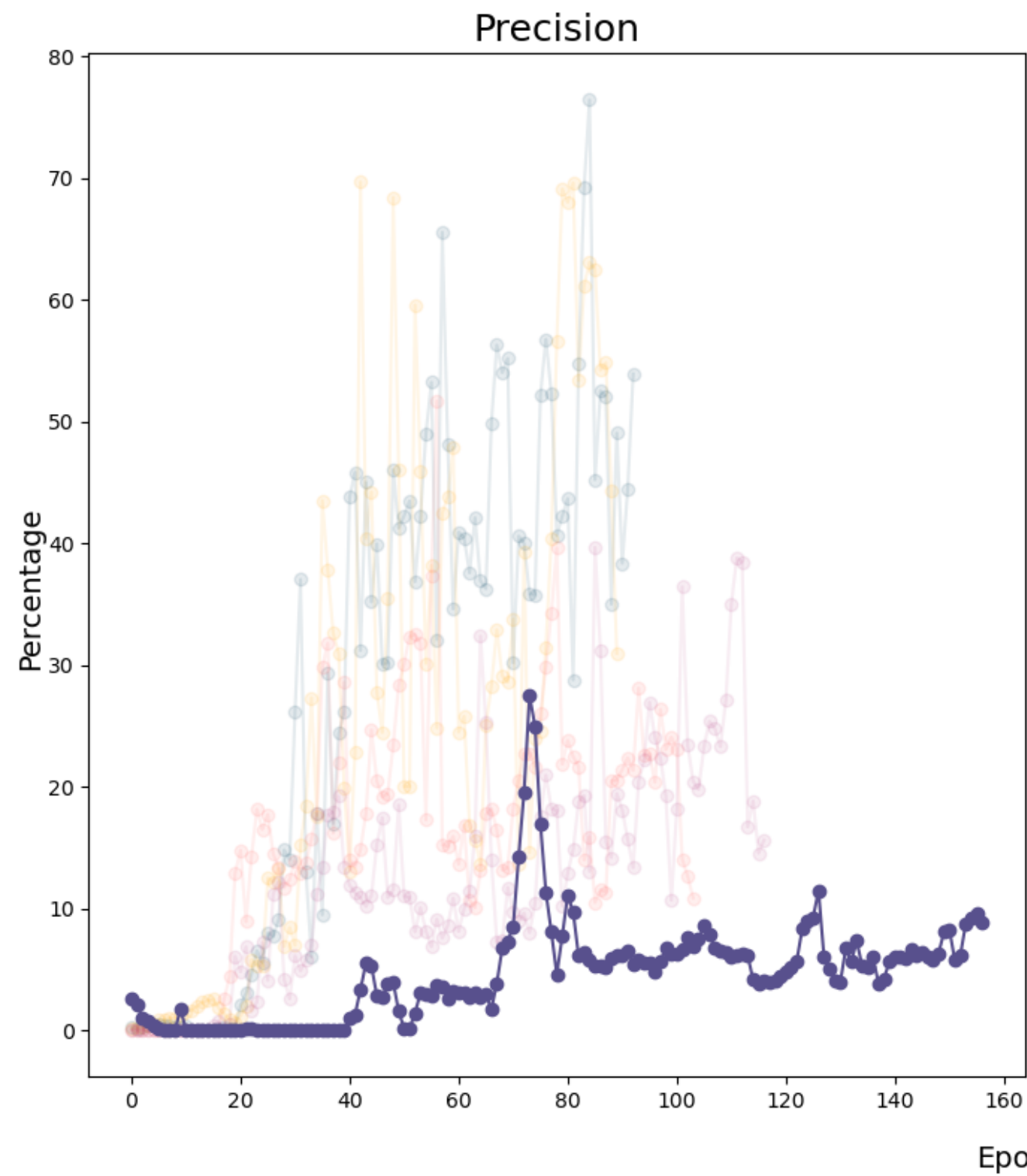
# Results

## Principal Components Analysis of Sentinel-2 Bands and Lidar DEM





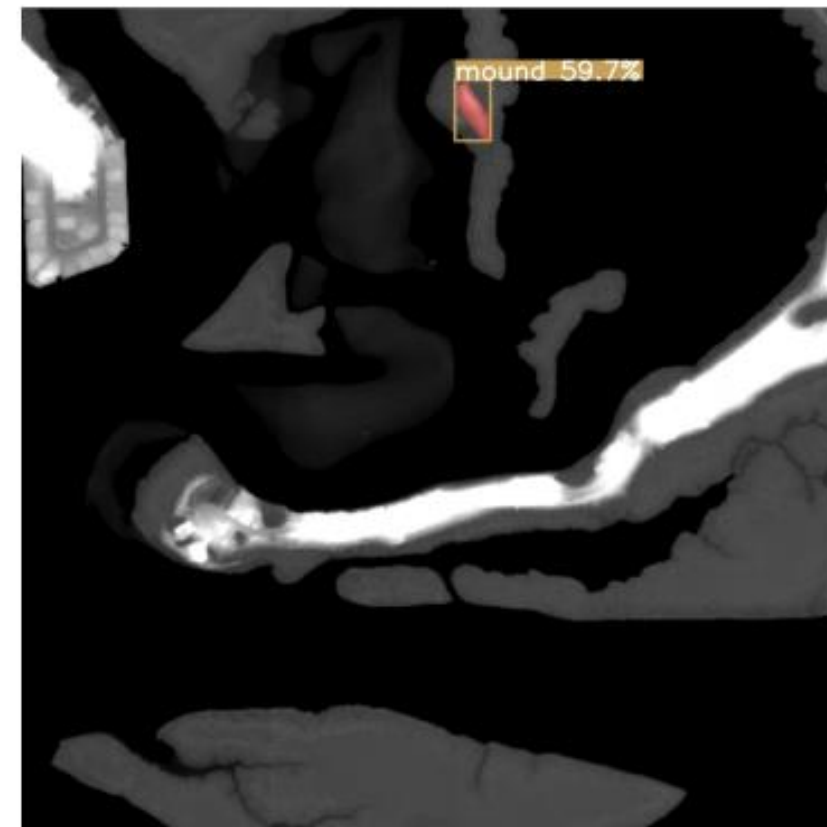
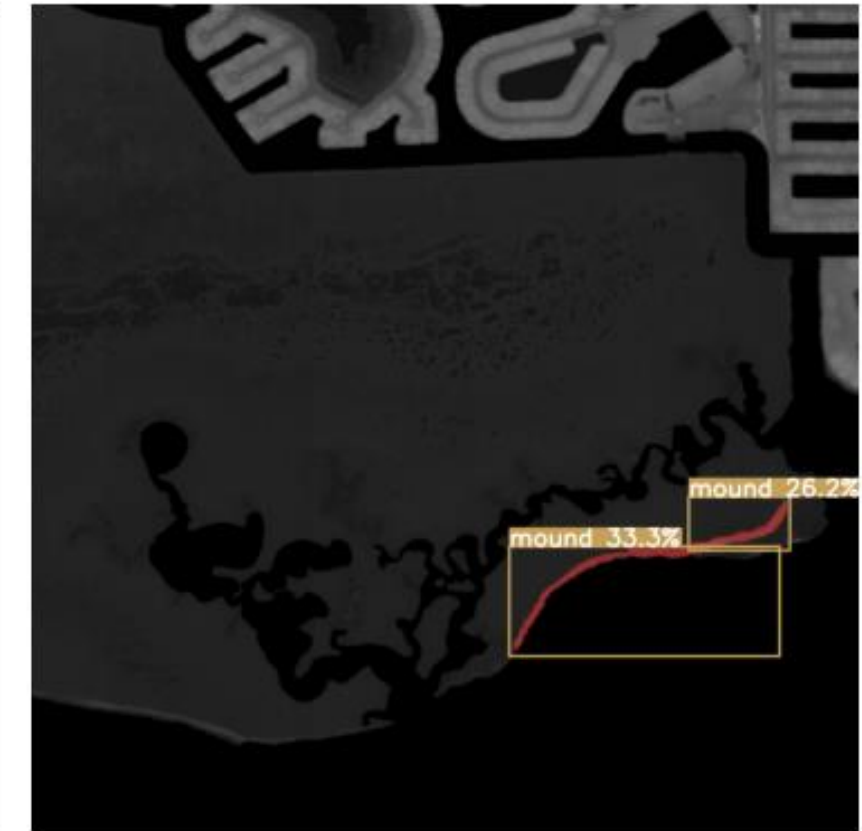
# National Agriculture Imagery Program





# SHELL MOUND SEGMENTATIONS

The model detected shell mounds we know exist . . .

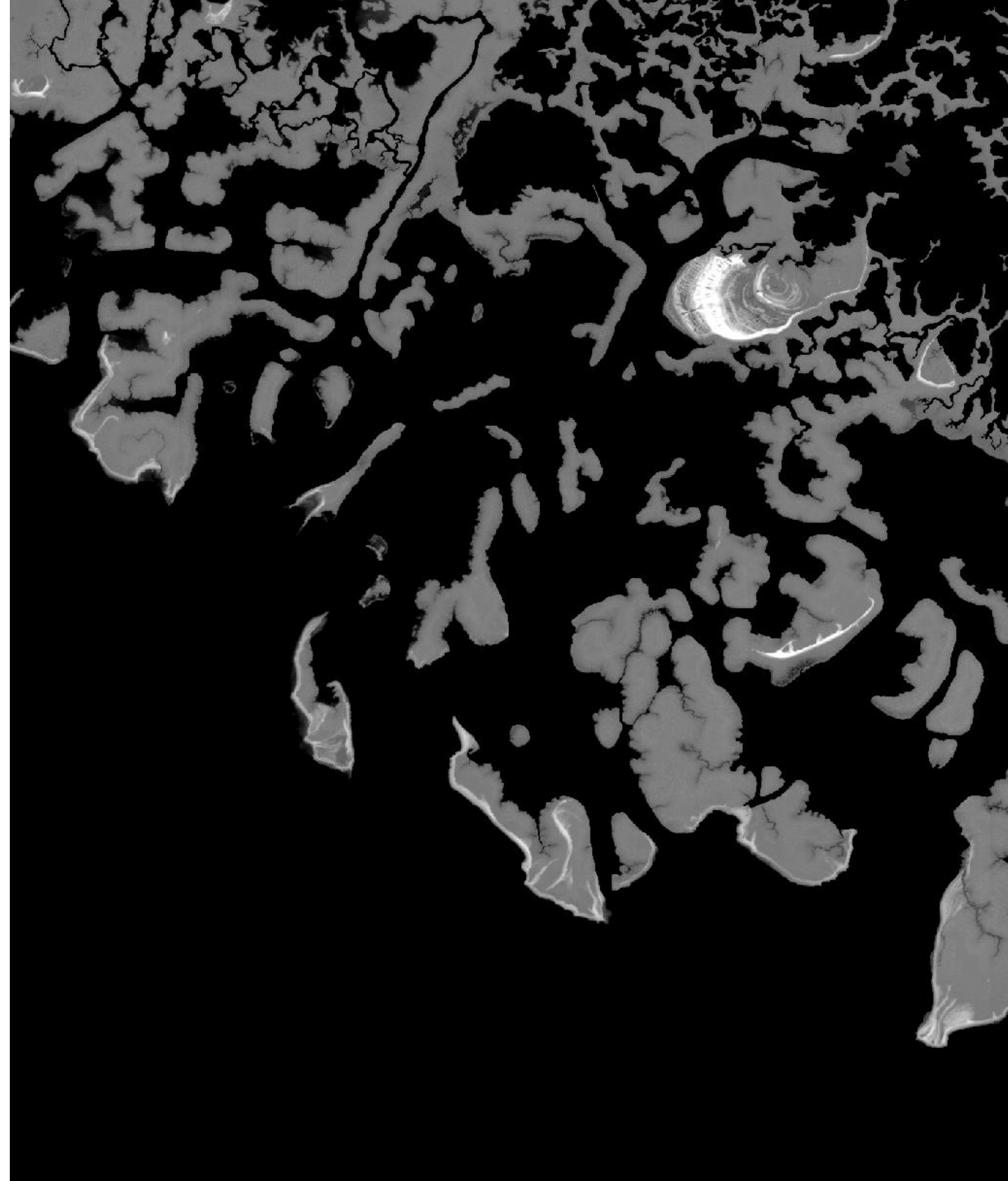


. . . and found potential new mounds we didn't know about



# KEY TAKEAWAYS

- We found the best results when the model was trained on high-resolution LiDAR DEM data
- The model misses many shell mounds, but of the ones it does detect, it is fairly accurate
- The model can segment shell mounds in different shapes and sizes





# IMPLICATIONS

- Many shell mounds from the past have since been destroyed, and possibly several without formal documentation
- Having accurate boundaries of shell mounds is crucial for preserving and protecting these sites

Remains of a shell mound destroyed to make roads

Photographed by John Kunkel Small, near Daytona Beach, Florida.  
December 1919 (State Archives of Florida, Florida Memory)





- Test other AI models (such as Mask-RCNN)
- Train the model on other remote sensing data that can capture the unique characteristics of shell mounds
- Use the predicted shell mound outlines to calculate statistics such as change in vegetation and land use/land cover over time

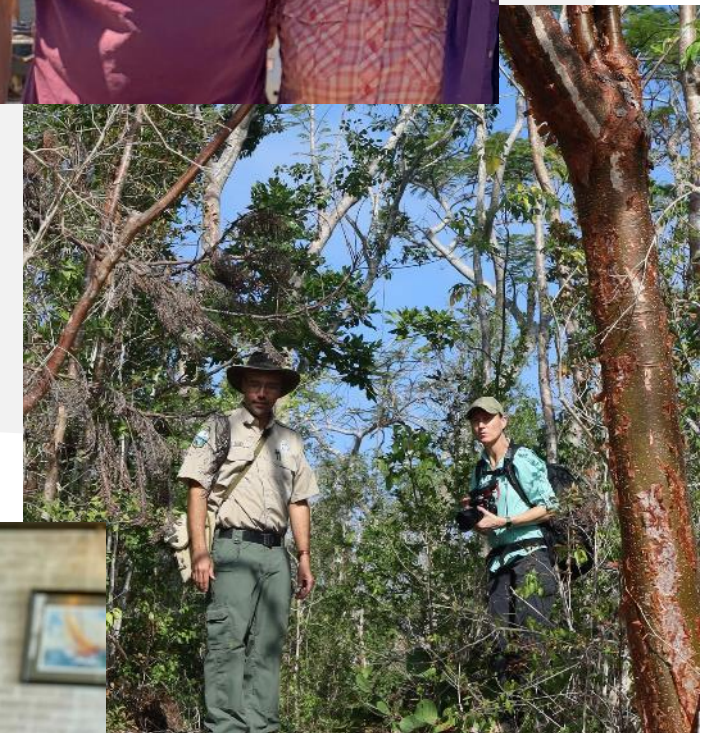


# THANK YOU

## Collaboration with:

Annisa Karim  
Adam Knight  
Alison Gieson  
Mike Duey  
Justin Lamb  
Robert Ballard  
Alison Spikowsky  
Bill Spikowsky  
Friends of the Randell Research Center  
Friends of the Mound House  
Calusa Land Trust  
Florida Bureau of Archaeological Research  
University of Georgia  
Penn State University

**Funded by:** National Science Foundation (BCS-2304807);  
University of Florida Biodiversity Institute Seed Grant, 2024





# REFERENCES

2018 USGS Lidar DEM: Southwest, FL. *NOAA Office for Coastal Management*. [https://noaa-nos-coastal-lidar-pds.s3.amazonaws.com/dem/USGS\\_FL\\_Southwest\\_2018\\_9049/index.html](https://noaa-nos-coastal-lidar-pds.s3.amazonaws.com/dem/USGS_FL_Southwest_2018_9049/index.html)

Data Access Viewer, *NOAA Office for Coastal Management*. <https://coast.noaa.gov/digitalcoast/tools/dav.html>

Erlandson, Jon M. Shell middens and other anthropogenic soils as global stratigraphic signatures of the Anthropocene. 2013. *Anthropocene*, 4, pp. 24-32.

Florida Master Site File. *Florida Division of Historical Resources*, Florida Department of State. <https://dos.fl.gov/historical/preservation/master-site-file/>

Florida Natural Areas Inventory. (2010). Guide to the natural communities of Florida: 2010 edition, Tallahassee, FL. <https://www.fnai.org/species-communities/natcom-guide>

Guyot, A., Lennon, M., & Hubert-Moy, L. (2021). Objective comparison of relief visualization techniques with deep CNN for Archaeology. *Journal of Archaeological Science: Reports*, 38, 103027. <https://doi.org/10.1016/j.jasrep.2021.103027>

Jocher, G., Qiu, J., & Chaurasia, A. (2023). Ultralytics YOLO (Version 8.0.0) [Computer software]. <https://github.com/ultralytics/ultralytics>

National Agriculture Imagery Program. (2021). U.S. Department of Agriculture.

Office for Coastal Management, 2024: NOAA Office for Coastal Management Coastal Inundation Digital Elevation Model: Florida, SW, <https://www.fisheries.noaa.gov/inport/item/70057>.

Office for Coastal Management Partners, 2024: 2007 Florida Division of Emergency Management (FDEM) Lidar Project: Southwest Florida, <https://www.fisheries.noaa.gov/inport/item/49677>.

Orengo, H.A., Conesa, F.C., Garcia-Molsosa, A., Lobo, A., Green, A.S., Madella, M., Petrie, C.A. (2020). Automated detection of archaeological mounds using machine-learning classification of multisensor and multitemporal satellite data. *Proceedings of the National Academy of Sciences*, 117(31), 18240–18250, <https://doi.org/10.1073/pnas.2005583117>

Small, John Kunkel. *Destroyed shell mounds*. 1919. State Archives of Florida, Florida Memory. <https://www.floridamemory.com/items/show/49833>

Taylor, K., & Lennon, J. (2011). Cultural landscapes: a bridge between culture and nature? *International Journal of Heritage Studies*, 17(6), 537–554. <https://doi.org/10.1080/13527258.2011.618246>

*Turtle Mound near New Smyrna Beach*. 1937 (circa). State Archives of Florida, Florida Memory. <https://www.floridamemory.com/items/show/34151>

Kokalj, Ž., Somrak, M. 2019. Why Not a Single Image? Combining Visualizations to Facilitate Fieldwork and On-Screen Mapping. *Remote Sensing* 11(7): 747.

Zakšek, K., Oštir, K., Kokalj, Ž. 2011. Sky-View Factor as a Relief Visualization Technique. *Remote Sensing* 3(2): 398-415 .